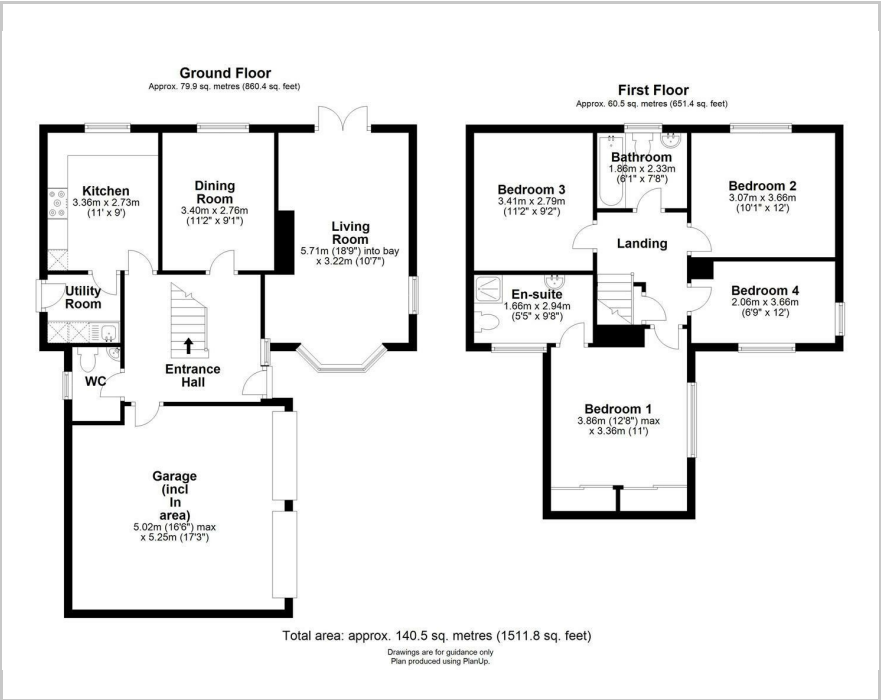




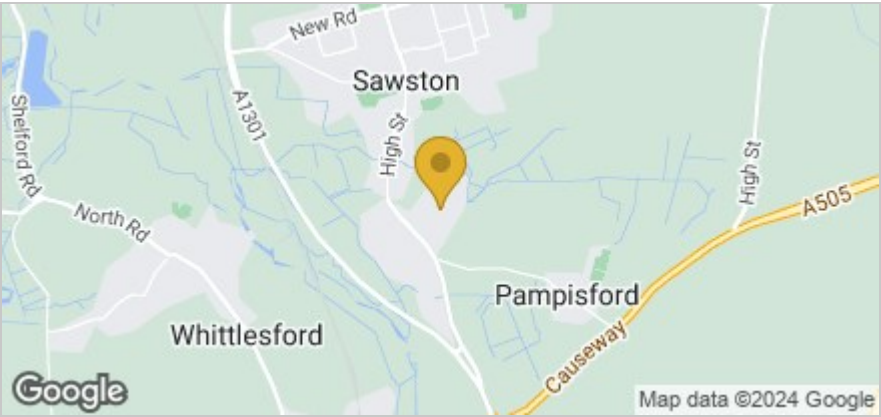
18 Rowan Avenue, Cambridge, CB22 3TD  
£1,800 Per month



Floor Plan



Area Map



Accommodation

- Quiet location
- Four bedrooms
- Double garage
- Off-road parking

A four-bedroom detached family home, in a quiet street in the popular village of Sawston.

On the ground floor, via the spacious entrance hallway, is the main living area with a bay window and french doors to the garden. There is a dining room, downstairs wc, and access to the kitchen and garage off the hallways as well. The kitchen is well equipped with a fridge freezer, dishwasher, and range cooker with a 6-ring gas hob. Off the kitchen is a very useful utility room with a washing machine and space for a dryer. The utility room also provides access to the rear garden and to the front of the property via the rear pathway.

On the first floor are the four bedrooms; three doubles and a large single. The primary bedroom benefits from integrated cupboards and an en-suite shower room. There is also a family bathroom and an airing cupboard.

Outside to the rear, there is a good-sized but easy-to-maintain garden, primarily laid to turf. To the front, there is a double garage and two off-road parking spaces.

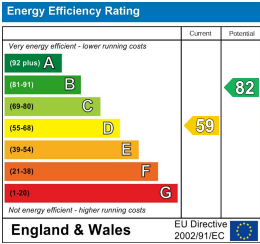
Rowan Avenue is a quiet cul-de-sac located on the south side of Sawston. The village itself has plenty of amenities as well as two primary schools and a village college.



Viewing

Please contact our Gray & Toynbee - Cambridge Office on 01223 439 888 if you wish to arrange a viewing appointment for this property or require further information.

Energy Efficiency Graph



These particulars, whilst believed to be accurate are set out as a general outline only for guidance and do not constitute any part of an offer or contract. Intending purchasers should not rely on them as statements of representation of fact, but must satisfy themselves by inspection or otherwise as to their accuracy. No person in this firms employment has the authority to make or give any representation or warranty in respect of the property.